

Interagency Resilience Coordination Meeting

CHARLES SUTCLIFFE



Agenda

- I. Welcome and Introductions**
- II. Framework for Resilience**
- III. Overview of Act 315 & Timeline**
- IV. Identification of Issues**
- V. Grant Opportunities Update**
- VI. Public Comment**

Introductions

How do we as different entities with our own missions and commitments to serving people become more *flexible* and *adaptable* in the face of changes and challenges relating to the environment?

- Your Name
- Your Organization
- Your Role within Organization
- 1 way you see extreme weather or gradual changes in the environment impact your mission

Background

- Rockefeller 100 Resilient Cities → New Orleans CRO and Resilience Strategy
- 2017 Coastal Master Plan—Future With Action
- 2018 Governor’s Cabinet Workshop
- 2020 Executive Order on Coastal Resilience → Adaptive Governance Initiative
 - Tools, Report Cards, Report and Recommendations
- 2023 Legislative Session → Act 315



Coastal change

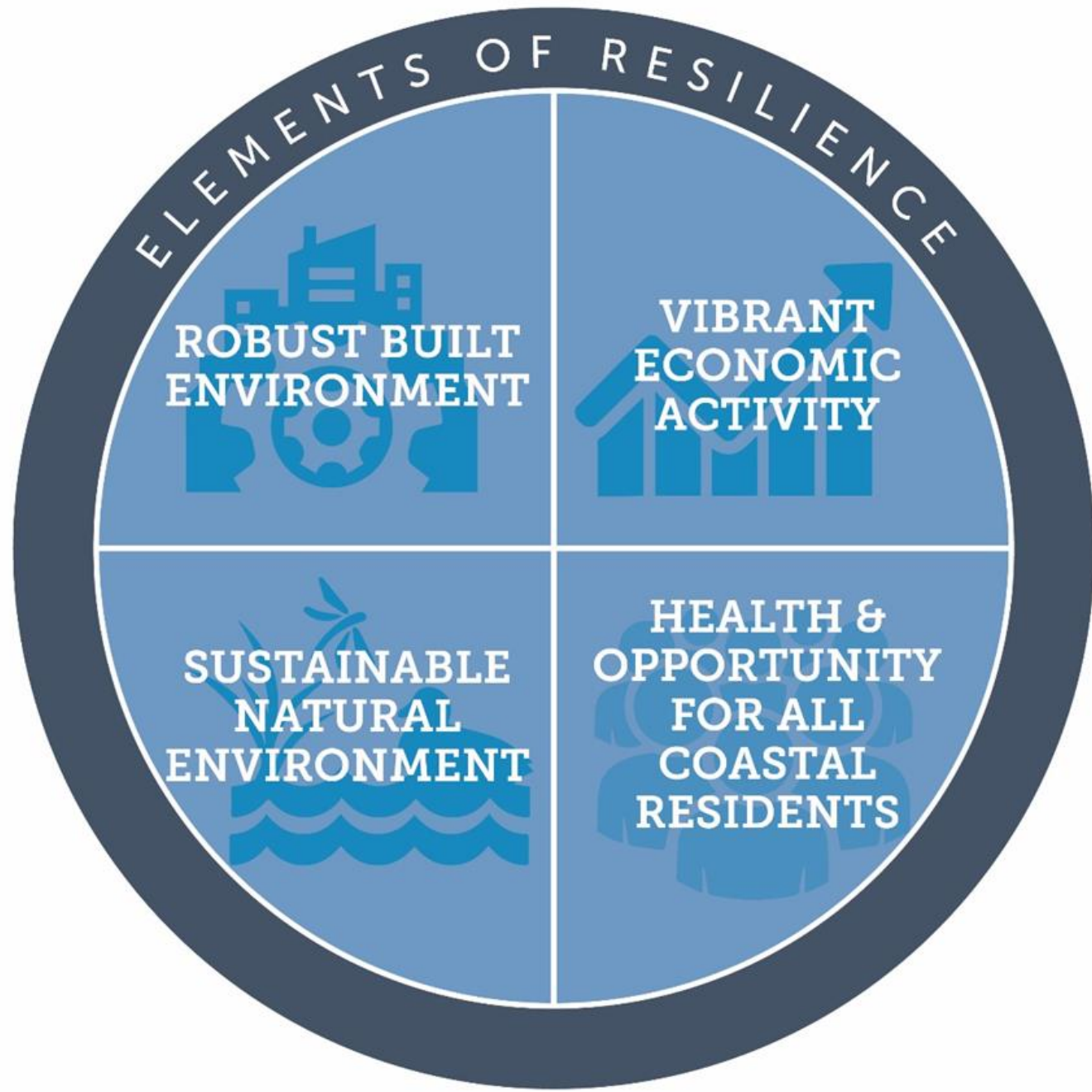
COASTA

Impact category

INFR

State agency

DOTD



UNITY PENETRATION

ENVIRONMENTAL DAMAGE

LED

DOA

Summer Headlines

- Wildfires force evacuation of Bogue Chitto State Park (Washington Parish)
- Gov. Edwards declares state of emergency for extreme heat
- Excessive heat and drought projected to cost \$135 to \$290 million in losses in cattle/beef
- Gulf of Mexico water temperatures are hottest on record
- Low water in the Mississippi allows salt water from Gulf to threaten drinking water supplies



In-Room POLL

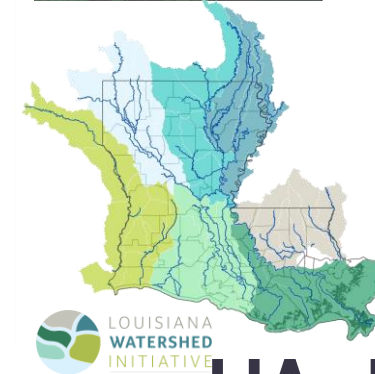
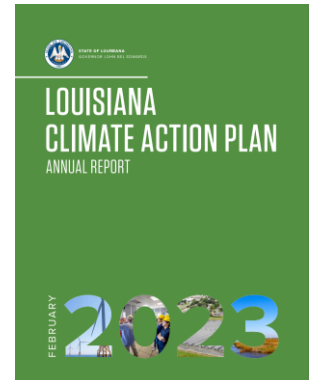
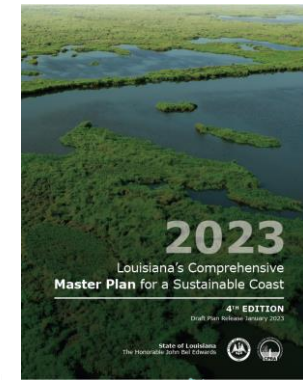
**Which Element
of Resilience Do
you Most
Identify With?**

Act 315 Overview

- Chief Resilience Officer
- Resilience Report
- Louisiana Resilience Task Force
- Interagency Resilience Coordination Team

Chief Resilience Officer

- Coordination and Strategic Direction and Alignment (speak with one voice, elevate the conversation to the Governor even on sunny days)
 - Comment and Review federal resilience policy/represent the state's position
 - Make recommendations to the Legislature and Congress with respect to LA's resilience
- Pursue Funding
- Participate in Planning Efforts (SHMP, CMP, CAP, etc.)
- Technical Guidance to Agencies and Local Jurisdictions (what does adaptation look like for me?)
- Coordinate with GOHSEP for disaster response and emergency management
- Convene, Report, and Listen to Stakeholders and Public



IJA, IRA

Resilience Report

- Articulate state's resilience goals and objectives
- Utilize best available science, including range of future projections, to ID and implement policies, projects, and programs that achieve resilience objectives
- Prioritize agency-identified adaptation actions based on Vulnerability Assessments
- Describe agency strategic actions
- Due February 15, 2024

Resilience Task Force

“To provide strategic direction to resilience efforts across the state and to make recommendations to the Chief Resilience Officer”

- CRO—represents Coordination Team
- GOHSEP
- DOTD
- DCFS
- E.A. Coastal
- Commissioner of Admin.
- Commissioner of Insurance
- Police Jury Association
- Parish Presidents Association
- Louisiana Municipal Association
- Speaker of the House
- President of Senate
- Public Service Commission
- Commissioner of Higher Education

Interagency Coordination Team

Made up of Resilience Officers from Across Government (Executive, Legislative, Judicial Branches)

- **Communication, Awareness, and Alignment**
 - *Bring down silos, interact as problem solvers and leaders*
 - *Grant Opportunities, Program Updates, Solicit Input/Expertise*
- **Oversee Development of Statewide Resilience Report**
 - *Advise on the identification and prioritization of statewide resilience goals and objectives*
- **Recommend and Assist Agencies in Development of Strategic Plans for Resilience**
 - *Assist your agency in the Vulnerability Assessment*
 - *Seek assistance from CRO or other agencies to integrate resilience goals into projects, plans, and programs*
 - *Develop and make progress on agency's strategic resilience plan*

Resilience Officer/Coordination Team Roles

Leaders within your Agency

- Advance adaptation for *your* mission, assets, programs
- Educate about issues and impacts
- Conduct Vulnerability Assessment
- Develop Strategic Plans

Leaders within the State

- Thinking across agencies/missions
- Future-oriented
- Discussions and communication as whole group and small groups
- Listening to and collaborating with communities we serve
- Articulation of priorities/report

Timeline

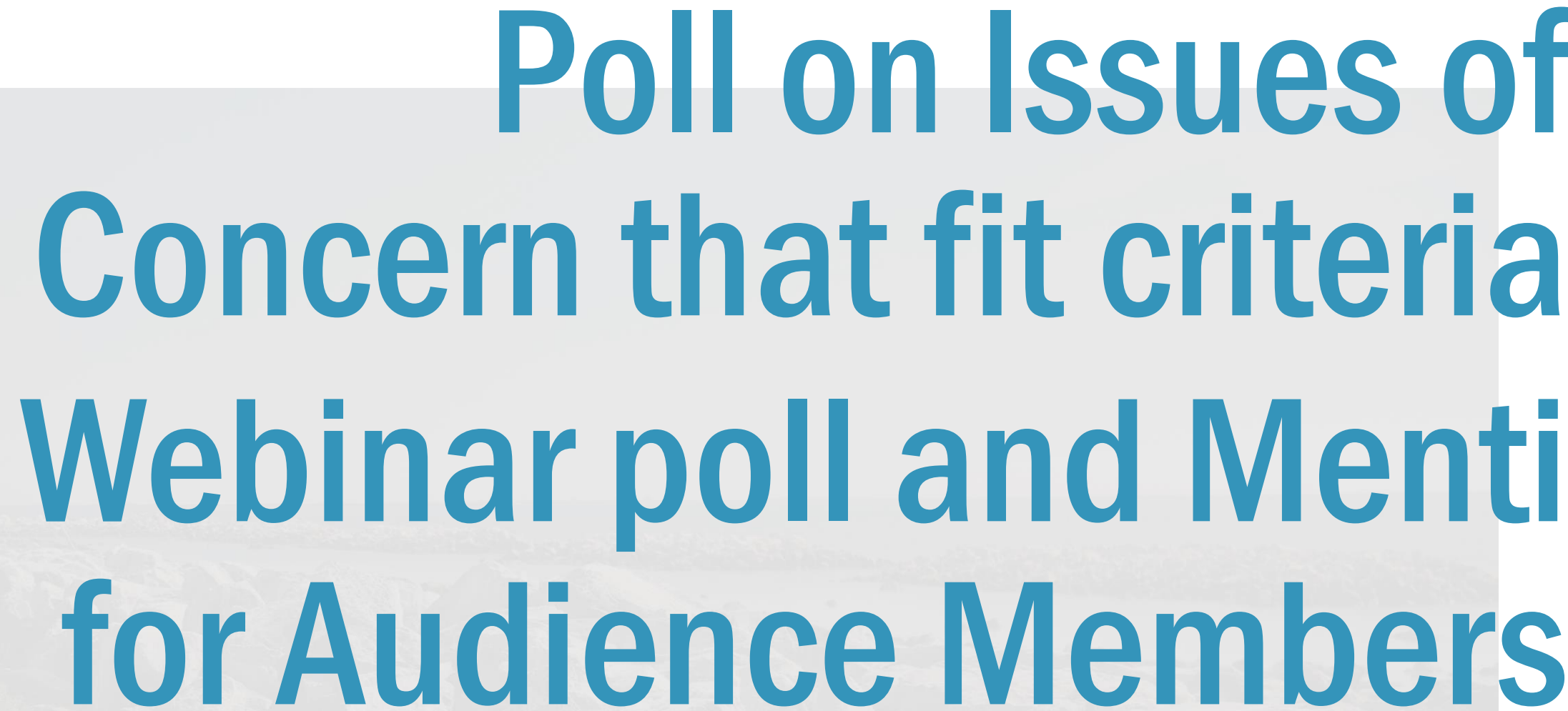
Activity	August	September	October	November	December
Interagency Team Meetings	8/31	9/28			
Identification of Issues					
Develop Report Outline/Objectives					
Resilience Task Force				11/1	12/14
Draft Report for Input			<i>Develop Draft Content</i>		
Final Report					12/14



QUESTIONS?

What is our focus?

- Focused on the future (science, trends, projections)
- Slow-moving environmental changes
- Events that never become federal disasters
- Issues that do not neatly fit within a single agency or level of government's purview (fall between the cracks)/Issues that benefit from collaboration
- Follow issues as they ripple across elements of resilience (infrastructure, ecology, society, and economy)



Poll on Issues of Concern that fit criteria Webinar poll and Menti for Audience Members

Grants Update

- NOAA Regional Climate Resilience (LOI's just turned in)
- Building Resilient Infrastructure and Communities (coming soon)
- Climate Pollution Reduction Grant (in progress)
- Other?

Meeting Dates for 2023

Interagency Team

Thurs. Aug. 31,
10-12
Main Library
Baton Rouge

Interagency Team

Thurs. Sept. 28
10-12
(Center for River
Studies or
Bluebonnet
Library?)

Task Force

Wed. Nov. 1
10-12
State Capitol
HCR 3

Task Force

Thurs. Dec. 14
10-12
State Capitol

Public Comment?





Connect
Resilience@la.gov