



# UTILIZING STRUCTURED DECISION-MAKING TO SUPPORT THE CLIMATE INITIATIVES TASK FORCE

Alyssa Dausman, PhD; Allison DeJong; Beaux Jones, JD;  
P. Soupy Dalyander, PhD; Melissa Baustian, PhD; Colleen McHugh

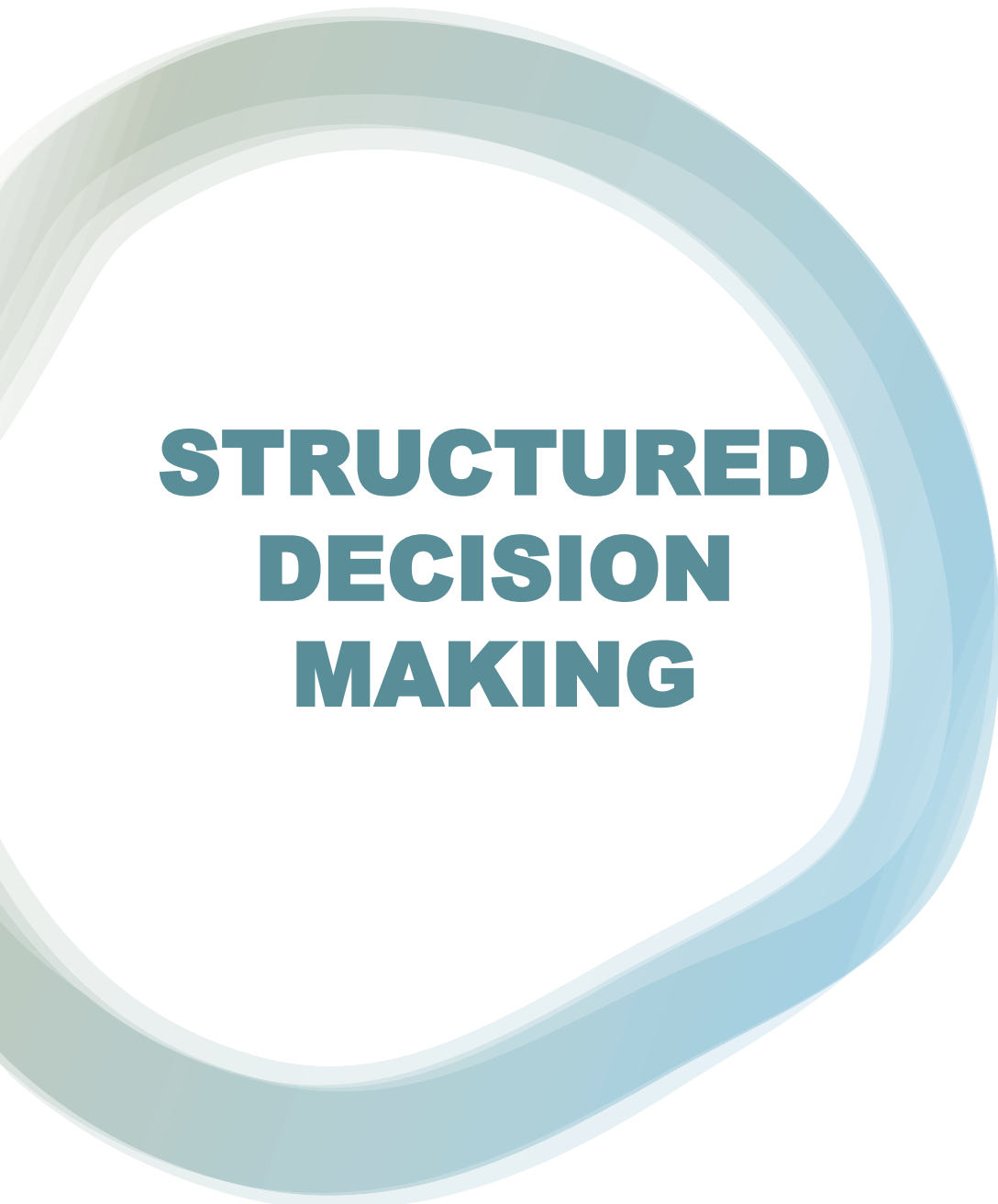


THE WATER INSTITUTE  
OF THE GULF®



“A formalization of common sense for decision problems which are too complex for informal use of common sense.” (Keeney 1982)





# **STRUCTURED DECISION MAKING**

- Analyze decisions to identify solutions that achieve desired outcomes—explicit and transparent
- Encompasses a broad set of methods
- Supports decisions based on clearly articulated fundamental objectives
- Responds transparently to legal mandates and public preferences (or values) in decision making
- Integrates science and policy

(Runge, 2016)



THE WATER INSTITUTE  
OF THE GULF®

# **STRUCTURED DECISION MAKING IS NOT**

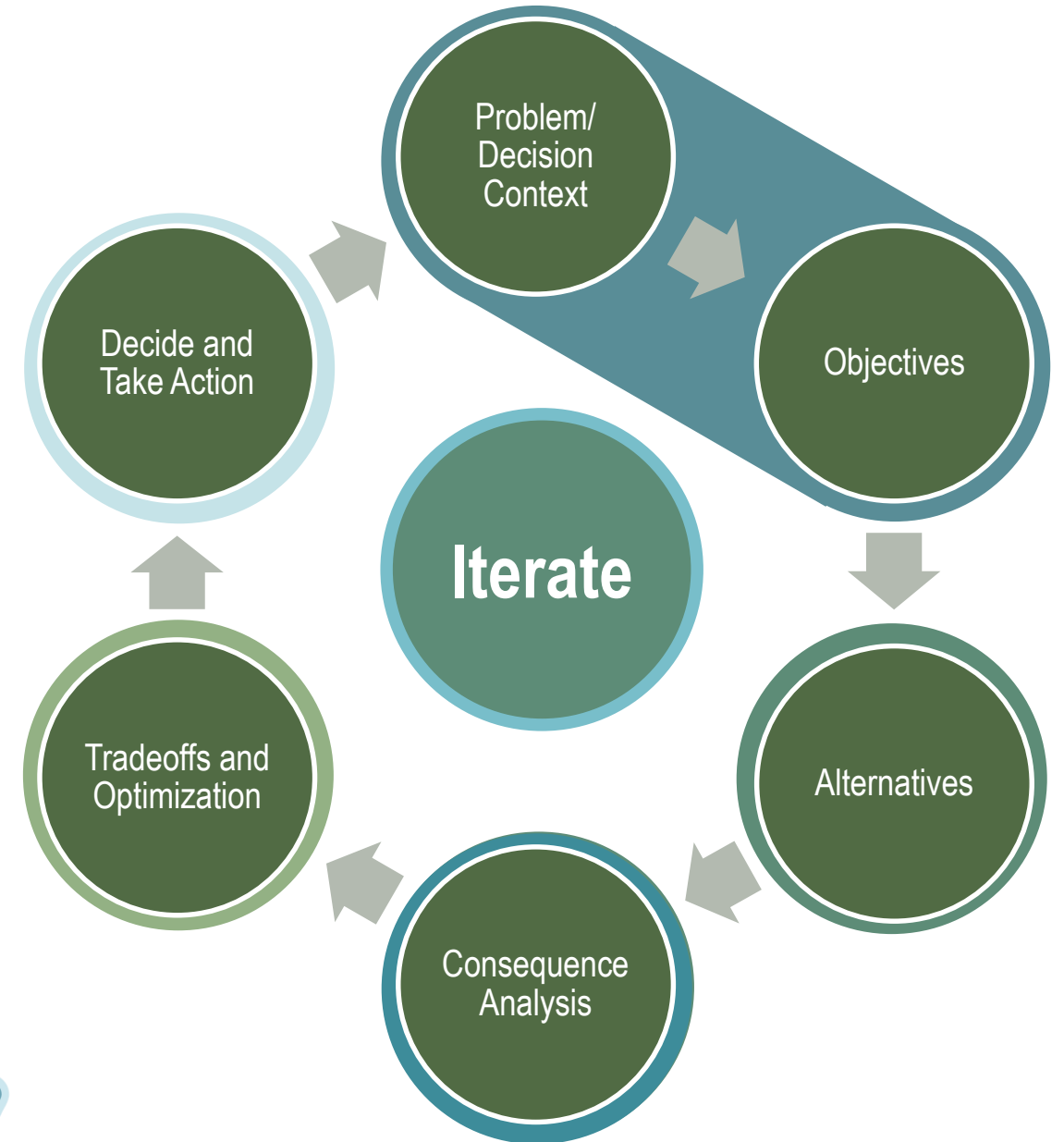
a prescription for a rigid approach for  
problem solving



# Work through decision-making in a collaborative process with stakeholders

## *PrOACT Framework for Structuring Decisions:*

- Defining the Problem (Decision Context)
- Determining the Objectives
- Identifying Alternatives (Solutions)
- Evaluating alternatives and forecasting the Consequences
- Evaluating the Trade-offs
- Making the decision and taking action



# THE INSTITUTE'S ROLE



# FRAMING THE DECISION

“A good solution to a well-posed decision problem is almost always a smarter choice than an excellent solution to a poorly posed one.” –Ralph Keeney

“Never enough time to do it right...always enough time to do it over” –Anonymous



# PROBLEM/DECISION CONTEXT: FROM EXECUTIVE ORDER

Louisiana and its citizens have suffered catastrophic losses and human, economic, and social harm as a result of increased flood risk due to coastal land loss, and the continued threat of further land loss to Louisiana's coast endangers its residents, economy, and native fish and wildlife species...

...to improve our resilience, sustain our coast, and help avoid the worst impacts of climate change, Louisiana must proactively work to reduce the greenhouse gas emissions that are driving up global temperatures, raising sea levels, and increasing risks that threaten our health and safety, quality of life, economic growth, and vital habitats and ecosystems...

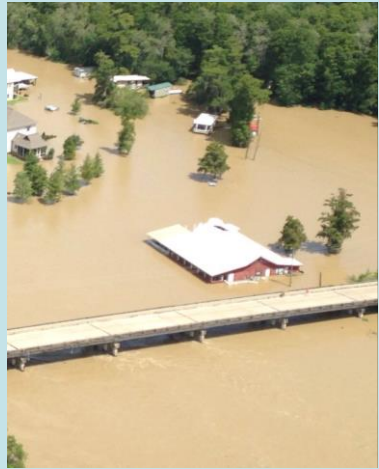
...Louisiana is committed to working with Louisiana businesses, industries, local communities, and civil society to reduce emissions through a suite of balanced policy solutions...

...by following the science and welcoming all stakeholders to limit the impacts of climate change that harm the state's natural and cultural heritage, while adapting to maintain its position as a world leader in energy, industry, agriculture, and transportation...





# PROBLEM/DECISION CONTEXT: FROM EXECUTIVE ORDER



Louisiana and its citizens have suffered **catastrophic losses and human, economic, and social harm** as a result of increased flood risk due to coastal land loss, and the continued threat of further land loss to Louisiana's coast endangers its residents, economy, and native fish and wildlife species...

...to improve our resilience, sustain our coast, and help avoid the worst impacts of climate change, Louisiana must proactively work to reduce the greenhouse gas emissions that are driving up global temperatures, raising sea levels, and increasing risks that threaten our health and safety, quality of life, economic growth, and vital habitats and ecosystems...

...Louisiana is committed to working with Louisiana businesses, industries, local communities, and civil society to reduce emissions through a suite of balanced policy solutions...

...by following the science and welcoming all stakeholders to limit the impacts of climate change that harm the state's natural and cultural heritage, while adapting to maintain its position as a world leader in energy, industry, agriculture, and transportation...



# PROBLEM/DECISION CONTEXT: FROM EXECUTIVE ORDER



Louisiana and its citizens have suffered catastrophic losses and human, economic, and social harm as a result of increased flood risk due to coastal land loss, and the **continued threat of further land loss to Louisiana's coast endangers its residents, economy, and native fish and wildlife species...**

...to improve our resilience, sustain our coast, and help avoid the worst impacts of climate change, Louisiana must proactively work to reduce the greenhouse gas emissions that are driving up global temperatures, raising sea levels, and increasing risks that threaten our health and safety, quality of life, economic growth, and vital habitats and ecosystems...

...Louisiana is committed to working with Louisiana businesses, industries, local communities, and civil society to reduce emissions through a suite of balanced policy solutions...

...by following the science and welcoming all stakeholders to limit the impacts of climate change that harm the state's natural and cultural heritage, while adapting to maintain its position as a world leader in energy, industry, agriculture, and transportation...



# PROBLEM/DECISION CONTEXT: FROM EXECUTIVE ORDER



Louisiana and its citizens have suffered catastrophic losses and human, economic, and social harm as a result of increased flood risk due to coastal land loss, and the continued threat of further land loss to Louisiana's coast endangers its residents, economy, and native fish and wildlife species...

...to **improve our resilience, sustain our coast, and help avoid the worst impacts of climate change**, Louisiana must **proactively work to reduce the greenhouse gas emissions** that are driving up global temperatures, raising sea levels, and increasing risks that threaten our health and safety, quality of life, economic growth, and vital habitats and ecosystems...

...Louisiana is committed to working with Louisiana businesses, industries, local communities, and civil society to reduce emissions through a suite of balanced policy solutions...

...by following the science and welcoming all stakeholders to limit the impacts of climate change that harm the state's natural and cultural heritage, while adapting to maintain its position as a world leader in energy, industry, agriculture, and transportation...



# PROBLEM/DECISION CONTEXT: FROM EXECUTIVE ORDER

Louisiana and its citizens have suffered catastrophic losses and human, economic, and social harm as a result of increased flood risk due to coastal land loss, and the continued threat of further land loss to Louisiana's coast endangers its residents, economy, and native fish and wildlife species...

...to improve our resilience, sustain our coast, and help avoid the worst impacts of climate change, Louisiana must proactively work to reduce the greenhouse gas emissions that are driving up global temperatures, raising sea levels, and increasing risks that threaten our health and safety, quality of life, economic growth, and vital habitats and ecosystems...

...Louisiana is committed to working with Louisiana businesses, industries, local communities, and civil society to reduce emissions through a **suite of balanced policy solutions**...

...by following the science and welcoming all stakeholders to limit the impacts of climate change that harm the state's natural and cultural heritage, while adapting to maintain its position as a world leader in energy, industry, agriculture, and transportation...



# PROBLEM/DECISION CONTEXT: FROM EXECUTIVE ORDER



Louisiana and its citizens have suffered catastrophic losses and human, economic, and social harm as a result of increased flood risk due to coastal land loss, and the continued threat of further land loss to Louisiana's coast endangers its residents, economy, and native fish and wildlife species...

...to improve our resilience, sustain our coast, and help avoid the worst impacts of climate change, Louisiana must proactively work to reduce the greenhouse gas emissions that are driving up global temperatures, raising sea levels, and increasing risks that threaten our health and safety, quality of life, economic growth, and vital habitats and ecosystems...

...Louisiana is committed to working with Louisiana businesses, industries, local communities, and civil society to reduce emissions through a suite of balanced policy solutions...

....**by following the science and welcoming all stakeholders** to limit the impacts of climate change that harm the state's natural and cultural heritage, while adapting to **maintain its position as a world leader in energy, industry, agriculture, and transportation...**



# OBJECTIVES

“If you don’t know where you’re going, you just might end up somewhere else” – Yogi Berra



# OBJECTIVES: WHAT MATTERS TO THE DECISIONS ALONG WITH DESIRED OUTCOMES

- *Fundamental objectives* are the essential things (ends) we want to achieve
- A *fundamental objective* has the answer to “why is that important?” simply “because it is”
- *Fundamental objectives* have a single, clear direction that is universally understood

Example fundamental objectives:

- Reduce the carbon footprint of the built environment
- Example fundamental objectives related to land use, housing, and buildings could be:
  - Increase resiliency/adaptability of the built environment to changes in climate patterns
  - Maintain access to housing across a range of income levels
  - Encourage growth and profitability in the construction industry





# **TASK FORCE INTRODUCTIONS**

Name, Occupation, One Fundamental Objective



**THE WATER INSTITUTE  
OF THE GULF®**

